

PLUTO

Pluto is a designed LED light for industrial and other applications where a small size & flexibility is of importance. Typical application areas: machine tools, vehicles, sewing and textile industry, medical machines and any other applications for lighting up smaller surfaces.

LED-technology delivers low energy consumption and long service life as well as high vibration durability and virtually no radiated heat in the light beam. The high CRI-value ensures high quality of the emitted light. 25° optics are fitted, but the lamp is also delivered with interchangeable 8 & 40° optics.

It can be supplied with an external plugin adapter for 230V. The adapter's protection class is IP44.

Customized versions are available upon request.

Features include

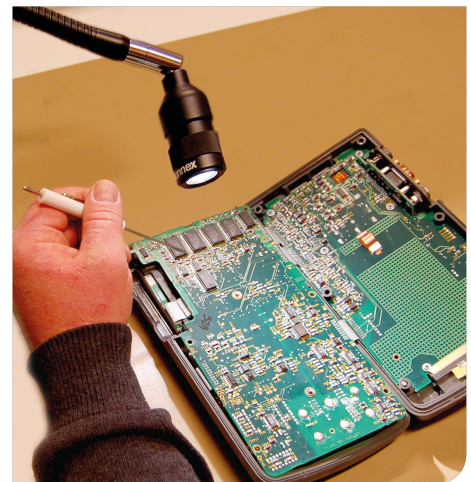
- Arm length 500 mm with swivel joint
- LED Service life > 25.000h
- IP20
- 12-24V AC/DC
- AC/DC-Adaptor (100-240/12V, IP44), available as accessory

Applications

- Industrial applications
- Vehicles
- Medical
- Reading light

Benefits

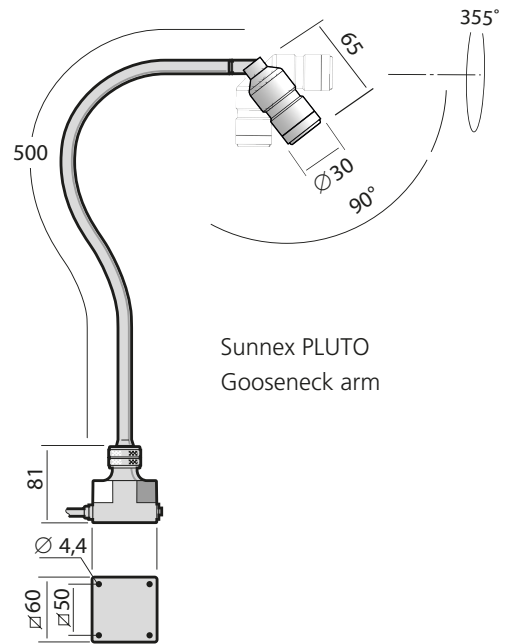
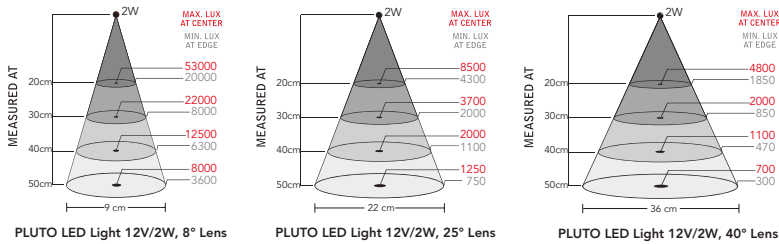
- Long service life
- High quality components
- Easy to change positioning
- Compact and sturdy lamp head
- Designed lamp head
- 8° and 40° optics included





Technical specifications

Supply voltage	12-24V AC/DC, 1,9m cordset (100-240VAC Plugin AC/DC-adaptor available, IP44)
Power consumption	1,7W
Arm length	500 mm
Colour	Black
Colour temperature	4000K
IP rating	IP20
Protection class	Class III
Beam angle	25°
Light output	95Lm, 1250Lx at 50cm distance (25° optics), 8 & 40° optics included in box
Colour rendering index	CRI: >90
Weight	0,7 kg
Life span	>25.000h



Sunnex PLUTO
Gooseneck arm



Sunnex PLUTO Lamp head

Model	Arm	Connection	Other	Part no.
Pluto	500 mm	12-24V AC/DC	IP20	22702

PSU (100-240V~)



Plug-in Adaptor for Europe 230V
33901

Mounting Accessories



Magnetic base
14000

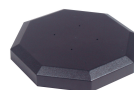


Table base
14015



C-Clamp
14020



Wall mount
14030

More info about
Accessories
see separate leaflet
www.sunnex.se