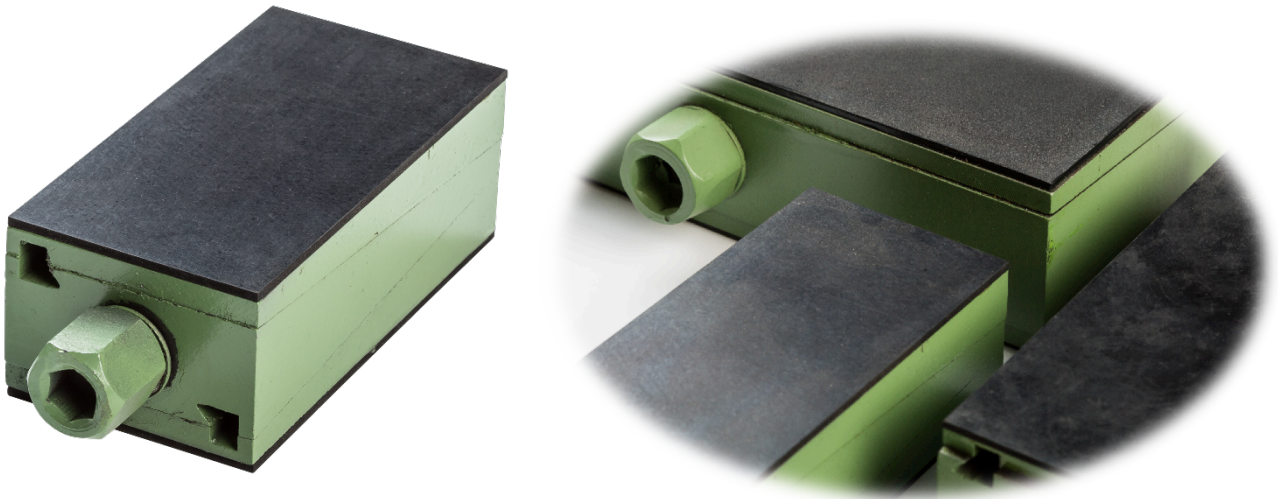


Sunnex WM



Sunnex WM is a series machine mounts specially designed for installing and levelling of medium and heavy duty machines used in areas such as the plastic-, engineering- and graphics industry

The Sunnex WM system consists of a high precision levelling wedge that, thanks to a simple screwing procedure enables height adjustment with an accuracy of up to 1/100 mm.

No fixing points are needed thanks to the well thought out design. It can be placed anywhere under the machine and be leveled in hindsight thanks to the wedge construction.

Preferences

- Loads up to 6500 kg, per machine mount
- Painted design
- High friction Nitrile rubber mixture
- Free standing

Applications

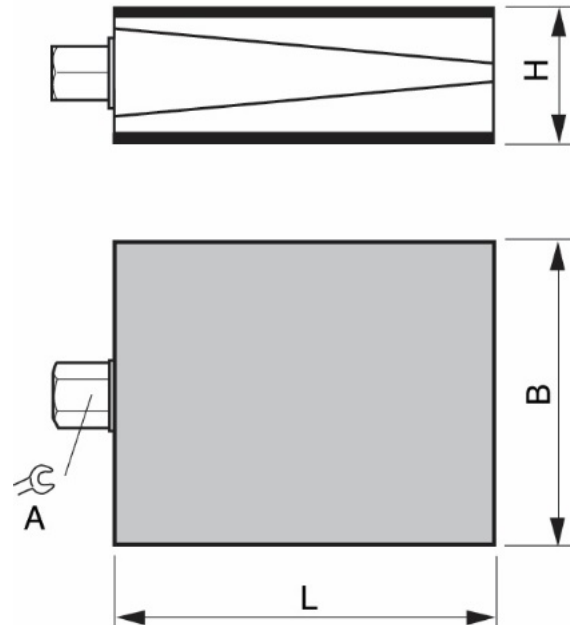
- Manufacturing industry
- Process industry
- Press- & stamping machines
- Extrusion machines

Advantages

- Excellent levelling
- Excellent friction to surface
- Excellent versatility
- Choice of rubber thickness

Technical specification WM

Rubber:	Nitrile rubber, high friction
Finish:	Painted
Load capacity:	850-6500 kg
Key grip, A:	13-22 mm
Height, H:	34-56 mm
Length, L:	105-200 mm
Width, B:	55-200 mm



Model	Load mount daN (kg)	L mm	B mm	H mm	A mm	Part no.
WM 10	Up to 850	105	55	34-42	13	47004
WM 20	Up to 1800	150	75	37-47	19	47007
WM 30	Up to 3500	200	95	44-56	22	47010
WM 40	Up to 6500	200	200	46-58	22	47016